



# Jobe valves PARTFILL Valves From Dairy Spares

**Dairy Spares Limited**  
Unit 1, Civic Industrial Park  
Waymills, Whitchurch  
Shropshire SY13 1TT

Telephone: **01948 667676**  
Facsimile: **01948 666505**  
email: [sales@dairyspares.co.uk](mailto:sales@dairyspares.co.uk)

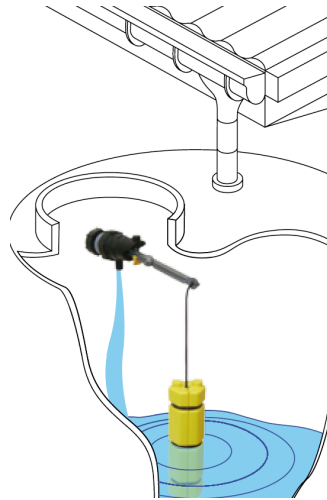
Part Fill valves are intended for use in plate cooler return water storage and rain water harvesting tanks. The purpose of the float valve is to automatically maintain a low or minimum level of water in the tank during periods of high usage (using a volume washer to wash down) or low rainfall. This allows services fed by the tank to continue while leaving capacity in the tank for refilling during the next milking or period of rainfall.



## Outline of Operation



- The valve is installed through the side wall of a storage tank. It should be mounted above the overflow level of the tank to prevent backflow.
- As the tank empties the weighted float travels down the cord and sits on the bottom stop to activate the valve.
- The valve will run until the weighted float lifts clear of the bottom stop.
- The float will then rise as rainwater fills the tank and falls as the tank water is used.
- The valve will only function at times when there is insufficient Plate Cooler or Rain water to maintain a water level in the tank above the bottom stop.



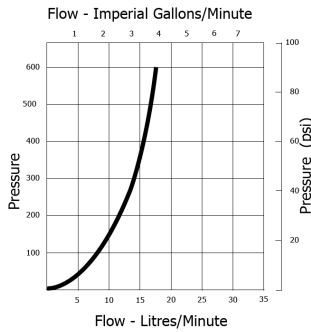
Typical Installaton

## Features

- Ideal for use with all makes and models of water tanks
- Compact in design
- Constructed from robust non corroding materials
- Built in non return valve
- Valve can be locked in the off position using the lock off Switch
- Up to 150mm water level differential obtainable (dependant on pressure)
- Easy to install and service
- Topaz Detach™ Valve Seal Access System for quick access to valve seal (Patented)



## Up to 20 ltr/min



**Rojo Partfill Inlet Size**  
**WF138B** 20mm (3/4") long tail thread with back nut.  
**Pressure Range**  
0 – 10 Bar (0 -150 psi)

## Rojo Applications

Maintaining water levels via a low pressure water or header tank supply in:

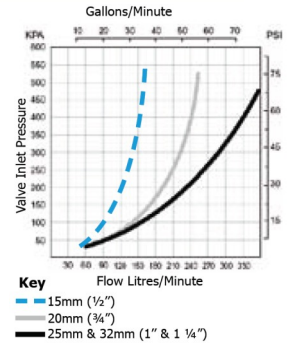
- Air Conditioning water tanks (losses through evaporation)
- Rain water harvesting tanks
- Water cisterns
- Irrigation and process applications.

## Up to 200 ltr/min

Topaz Partfill available Inlet Sizes

- WF139B** 20mm (3/4")
- WF139C** 25mm (1")
- WF139D** 32mm (1 1/4")

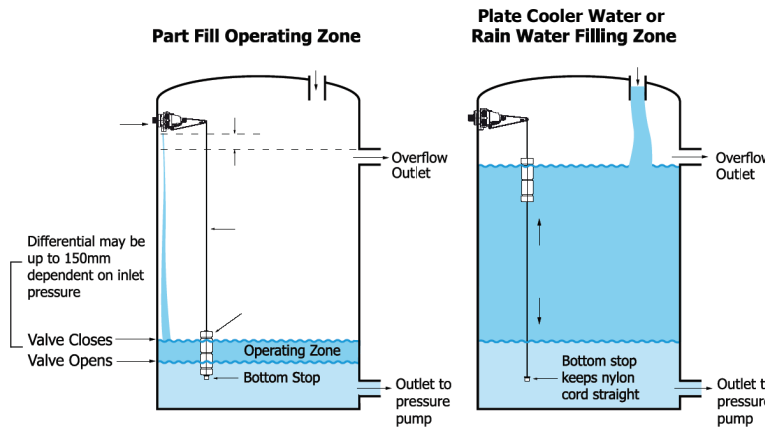
**Pressure Range**  
0.3 Bar – 10 Bar (5 psi-150 psi)



## Topaz Applications

Maintaining water levels via a pumped or pressurise supply in:

- Plate cooler water tanks with pumped extraction
- Rain water harvesting tanks
- Water cisterns
- Irrigation and process applications.



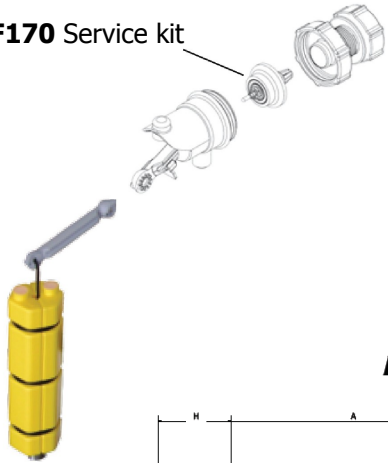
Note: Keep overflow, rain water inlet and outlet to pressure pump as far away from the float valve as possible.

Maximum Temperature of Operation 45°C, 115°F  
Typical Volume Washer pump may use 70 - 100 litres/min

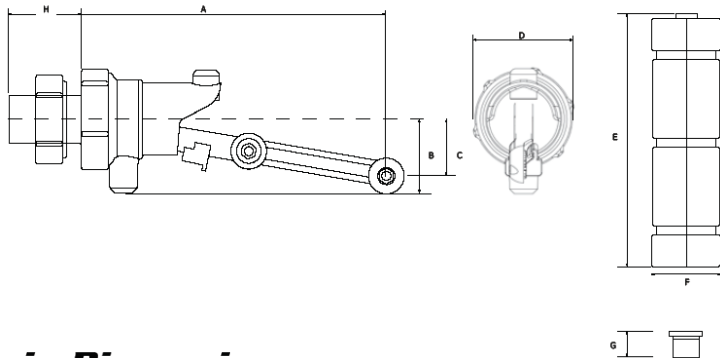


**PARTFILL**

WF170 Service kit



**Rojo Dimensions**



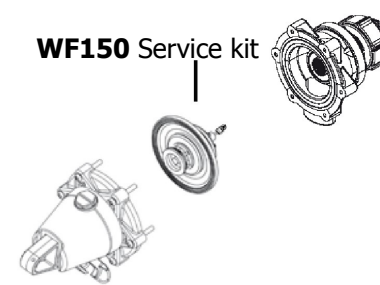
**Rojo Dimensions**

	mm	inches
A	210	8 1/4
B	40	1 9/16
C	30	1 3/16
D	56	2 3/16
E	208	8 3/16
F	62	2 7/16
G	20	12/16
H	38	1 1/2

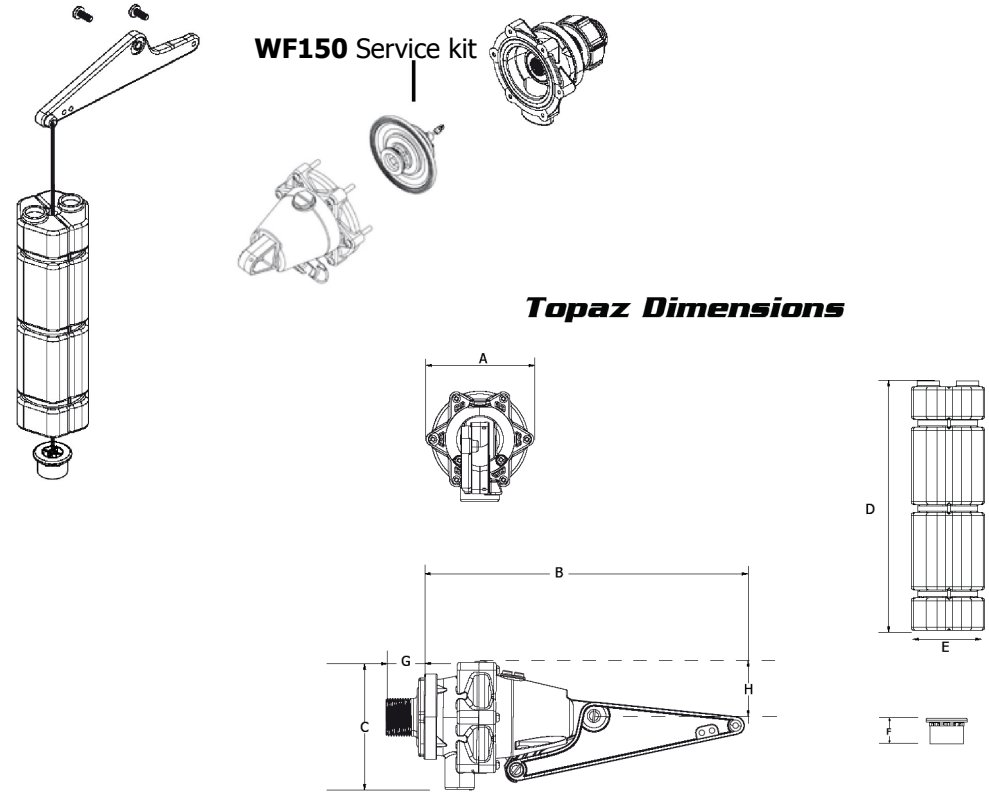


**PARTFILL**

WF150 Service kit



**Topaz Dimensions**



**Topaz Dimensions**

	mm	inches	
A	88	3 1/2	
B	227	8 15/16	
C	90	3 17/32	
D	208	8 3/16	
E	62	2 7/16	
F	20	12/16	
G	15mm (1/2") Long Tail	100	3 15/16
	20mm (3/4") Long Tail	46	1 13/16
	25mm (1") Long Tail	62	2 7/16
	32mm (1 1/4") Long Tail	67	2 21/32
H	35	1 3/8	