



Vink Stainless Steel Foot Bath (CB35)

Dairy Spares Limited
Unit 1, Civic Industrial Park
Waymills, Whitchurch
Shropshire SY13 1TT

Telephone: **01948 667676**
Facsimile: **01948 666505**
email: sales@dairyspares.co.uk

Vink tray for treating cow's feet

This walk-through tray consists of two adjacent channels through which liquid is pumped with force. The liquid consists of water with a disinfectant or medication.

When the animals walk through the channels, this liquid is sprayed forcefully against the hooves. Because cleaning takes place using a powerful jet, contamination is removed from the affected areas and between the toes and the medication reaches the desired place. The two channels ensure that the cows walk slowly and carefully through the tray, which is over 3 metres long. This gives the liquid time to clean the hooves thoroughly and penetrate satisfactorily.

The system contains about 15 litres of liquid, which is pumped around as soon as the cow starts walking through. A reservoir elsewhere in the shed is connected to the system, and the liquid is mixed here.

The system is automatically filled from this reservoir so that the liquid in the system is constantly refreshed and therefore the quality of the liquid remains the same from the first cow until the last one. A sieve and brush construction also separates solid contaminants from the liquid and recycles the water.

The advantages:

- The liquid is sprayed against the hooves by a powerful jet, which ensures thorough cleaning and disinfection.
- The animals walk slowly through the 3.2 meter long tray, which allows time for intensive cleaning and for the liquid to penetrate satisfactorily.
- About 200 ltr/min of water is circulated and sprayed into the tray at 0.2Atm
- Because contamination is filtered out of the system and new liquid is added continuously, the quality of the liquid remains the same from the first cow until the last one.
- The system cleans and fills itself automatically so that practically no manual work is required.
- The entire unit is solidly constructed and is made entirely of stainless steel.
- All means that are soluble in water can be used.
- Water consumption is low. Approximately 4 litres per 5 cows.
- This is an ideal method for preventing and treating infectious hoof disorders.



Because the liquid is pumped around and sprayed against the hoof by a powerful jet, contamination is removed satisfactorily from between the toes and from the affected areas. This means that the infection is effectively treated.

Material:

The walk-through treatment tray is 3.20 metres long and is made entirely of stainless steel.

Position:

After the exit from the milking shed. The treatment tray must be positioned in such a way that when it is not in use, the cows still have room to walk out down a separate exit race.

Use:

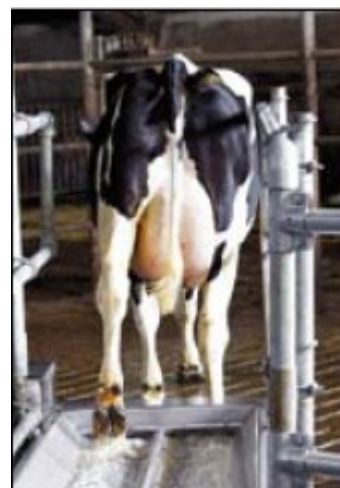
For curative treatment : 3 to 7 times per week.
Preventive : Once a week

Water consumption:

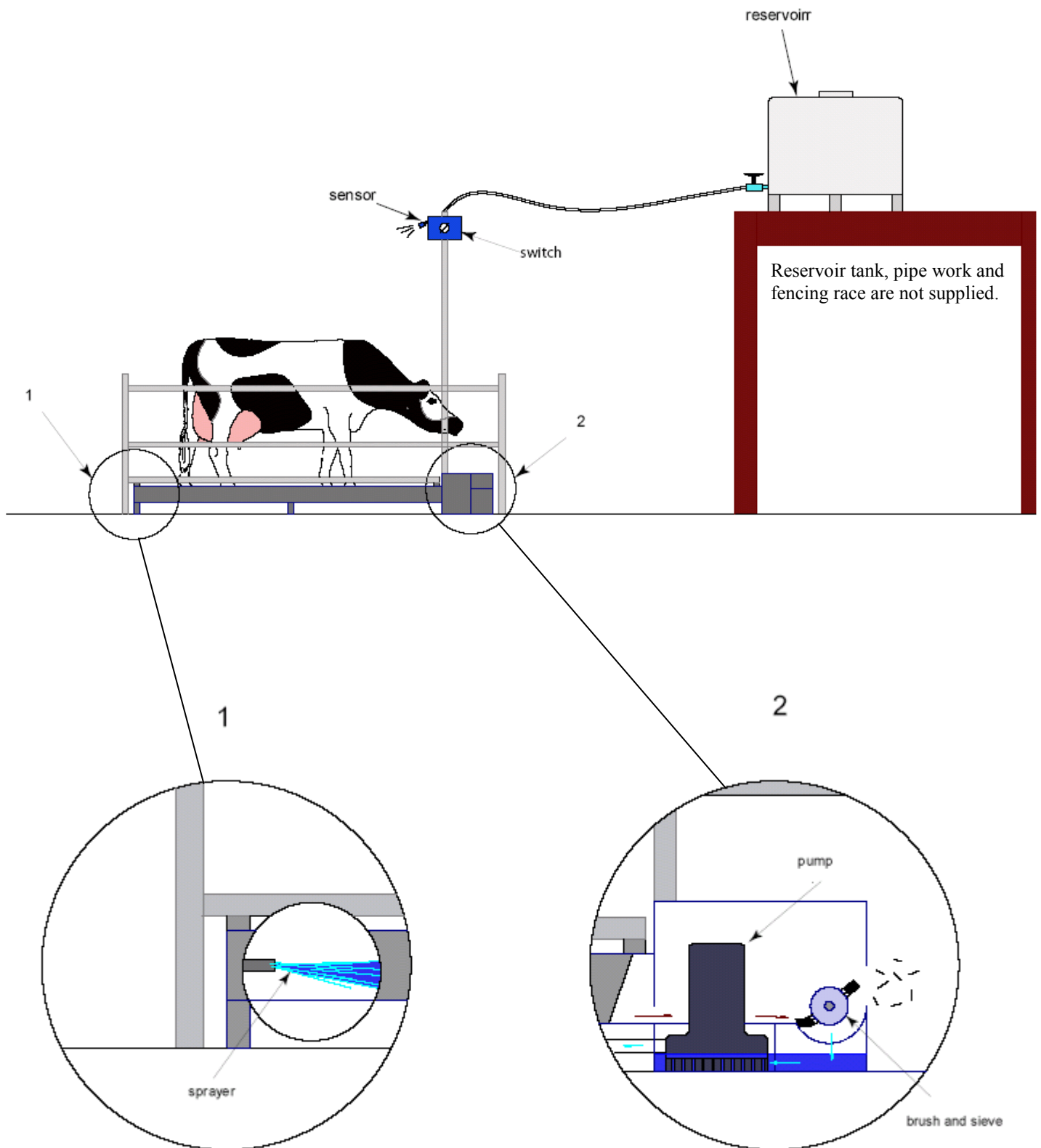
Approx. 0.75 litre per cow; the tray is automatically cleaned and the water recycled and refilled continuously. The tank reservoir requires periodically draining and cleaning out.

Result:

After 6 weeks of intensive treatment, the cows should be free of infectious hoof disorders.



The animals quickly become accustomed to the system; once they have walked through the dry tray twice, the spray mechanism can be put into operation. Because of the two channels, the cow walks slowly through the tray, which gives time for intensive cleaning and for the liquid to penetrate thoroughly.



The Vink Footbath tray (CB35) comes complete with internal water circulation pump, cleaning sieve, brush and motor, and the control electronics to operate the system when an animal approaches and is sensed by the infra-red movement sensor mounted on a post at the exit end of the tray (post supplied). This allows the unit to operate only when animals are approaching the tray to promote efficiency.

The Vink Footbath requires a 240VAC supply, water supply, reservoir tank (this can be raised aloft or pumped) and water supply pipe work to the footbath. Suitable racing and closure gate (for when not in use) is also required and is usually constructed to match existing exit race fencing.

Dimensions:

Length: 3.2 meter Width at entry end: 0.9 meter Width at exit end: 1.05 meter Height of tray: 0.45 meter