



“follow the teat”

NEW CALF, NEW  TEAT AND FOLLOW THE TEAT

"WHEN CALF HEALTH COUNTS"

**NEW RESEARCH
DATA INSIDE**



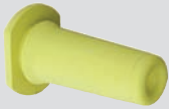
<http://youtu.be/7kPDpiWjvlk>



UNIT 1, CIVIC INDUSTRIAL PARK, WAYMILLS
WHITCHURCH, SHROPSHIRE, SY13 1TT, UNITED KINGDOM

Tel No.: +44 (0) 1948 667676
Fax No.: +44 (0) 1948 666505

email: sales@dairyspares.com
website: www.dairyspares.com



MB01



MB10

As natural as nature itself



CALVES NURSE NATURALLY

The natural way for a young calf to feed is to suckle slowly. As a calf suckles, milk will bypass the rumen via the oesophageal groove and enter the abomasum where it will form a curd. The curd will be broken down by enzymes and will enter the intestine where it is digested. As a calf suckles it produces saliva. Only the Milk Bar™ teat ensures all calves suckle at a slower, controlled rate, producing maximum saliva.

DRUG FREE HEALTH CARE

The natural antibiotic properties of saliva are a calf's first and main defence against infection. Saliva contains enzymes essential for proper digestion of milk. Saliva balances the pH in the abomasum which aids formation of the curd.

HELPS PREVENT SCOURS

The controlled feeding rate of the Milk Bar™ teat ensures correct curd formation in the abomasum, preventing raw milk entering the intestines. Raw milk in the intestines is a leading cause of nutritional scours or milk scours.

HELPS PREVENT PNEUMONIA

The correct suckling action with the Milk Bar™ teat at the correct height, approximately 60cm from the floor, will prevent milk entering the lungs.

NO CROSS SUCKLING

If a calf is fed with a fast feed teat or with a 'pump' type teat which has a non return valve, or from a bucket where it is drinking rather than suckling, it cannot produce the amount of saliva it needs, so will cross suck ears, navels, udders or it's surroundings in an effort to produce the saliva it should have made while nursing. Milk Bar™ teats feed at a controlled rate to ensure the saliva the calf needs is produced while feeding. Calves fed with Milk Bar™ teats are more settled and will not cross suck after feeding. See page 4 for trial results on cross suckling.

CLEANING

To clean inside Milk Bar™ teats use hot water and alkali detergent at least twice a week (dairy detergent or automatic dishwasher granules). Use a horizontal scrubbing action to wash the outside of the teats. It is recommended one Milk Bar™ teat is used per calf and the calf "follows the teat" through to weaning.



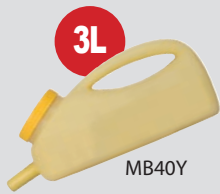
<http://youtu.be/7kPDiWjvIk>



MB01



MB10



MB40Y



MB40



8L
MB37B

3.4L



MB20



NEW DESIGN

- Increased capacity
- New hook



MB53



60L



MB22



120L



MB14



2x2.5L

MB18



MB13



90L

MB28



10x2.5L

MB27



3x2.5L

MB29



36L

MB26



5x2.5L

MB23



125L

MB125DU



15L

MB21



<http://youtu.be/PWazUSxmVY>



MB36A

Research in New Zealand studied the effect of milk flow rate on the health of two groups of young calves:

- 1 Milk Bar™ teats, which feed at a slower controlled feeding rate
- 2 Fast feeding teat with internal valves

The research studied the effect of milk flow rate on cross suckling and the implications for MASTITIS in young calves:

1

MILK BAR™ FED TEAT



MILK BAR.



- ✓ Udder shows no damage from cross suckling
- ✓ The teat is in perfect condition with the keratin plug still in place
- ✓ The udder is protected from infection



- ✓ Post feeding on Milk Bar™ teats, calves are settled

2

FAST FED TEAT



- ✗ Udder shows damage on 2 teats
- ✗ The teat end is open. The keratin plug has disappeared
- ✗ Heifer is open to infection and risk of subsequent mastitis



- ✗ Post feeding on fast feed teat, calves cross suckle vigorously after feeding

RESULTS AND OUTCOME

Milk Bar™ is recognised throughout the world as the best "prevention against the problems of cross suckling".

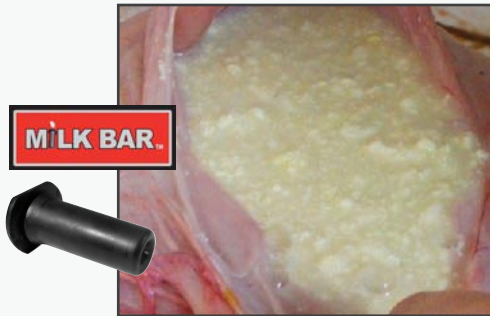
Avoid using fast flow rate teats or bucket feeding as they both limit the production of saliva and cause the calf's instinct to suckle its neighbour or environment to rectify its incomplete natural digestion.



The same research took calves 14 days old who were euthanised 2 hours after feeding and the abomasum was investigated.

1

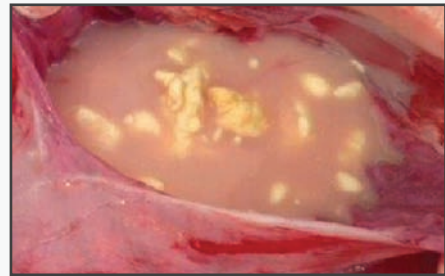
MILK BAR™ FED TEAT



- ✓ Healthy even "porridge-like" curding with excellent digestibility.
- ✓ Liveweight gain 0.736kg/day

2

FAST FED TEAT



- ✗ Lumps of coagulated milk floating in a watery fluid with reduced digestibility
- ✗ Liveweight gain 0.665kg/day

RESULTS AND OUTCOME

There was 254% more lactose remaining in the fourth stomach of calves in GROUP 2 fed with a fast feeding teat compared to calves from GROUP 1 fed on the slower Milk Bar™ teats.

Lactose is a sugar, therefore an ideal environment for the growth of pathogenic bacteria that uses this excess lactose as a source of nutrients to grow. The progression of a bad curd to the intestine is the major cause of digestive diarrhea, damaging the intestinal wall and causing the leakage of body fluids.

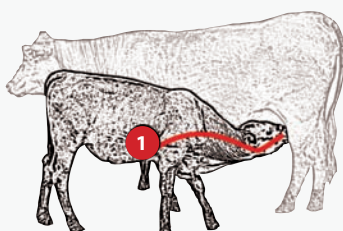
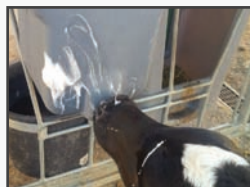
CONCLUSION

Rearing calves on the controlled feeding Milk Bar™ teat helps prevent digestive scours. The results clearly show Milk Bar™ Teat reared calves had no cross suckling damage, are heavier and more settled.

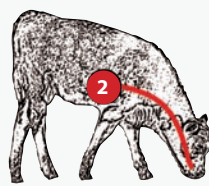
HOW IT WORKS

The unique slow feeding Milk Bar™ teat is designed with an internal web and an inverted nipple.

Together, they control the flow rate of a calf feeding as it would do naturally on its mother.



MILK



WATER

In nature the calf suckles milk with its neck stretched out and nose upwards; it drinks water from the ground, legs apart and head down.

- ✓ Milk goes into the stomach 1
- ✓ Water passes into the rumen 2

TURNING A FRAGILE MILK DRINKING CALF INTO A STURDY RUMINANT



MB37B



MB21

NO CROSS SUCKLING



MB23



MB14

NEW CALF, NEW MILK BAR™ TEAT



MB10

The new born calf must drink from a new Milk Bar™ teat, ensuring maximum salivation. If the calf moves to a peer group pen, the teat must be relocated in the group feeder to follow the calves development.

The growing calf gradually transfers its need for saliva from drinking to the ruminating phase. Therefore *“follow the teat”*. Group feeding for happy calves and happy farmers.

Group feeding is possible due to no cross suckling, fair shares for all, less work, less problems.



AS NATURAL AS NATURE ITSELF

GUIDELINES FOR USING THE "follow the teat" SYSTEM



DAY 1

Colostrum given through the Milk Bar™ soft yellow teat.



DAY 1

FROM DAY 3

Start calf on a firm black Milk Bar™ teat through a single feeder in individual pens



FROM DAY 3

OR

FROM DAY 3

Start calf on a firm black Milk Bar™ teat through a compartment feeder, particularly good for block calving or multiple births.



FROM DAY 3

FROM DAY 14-21

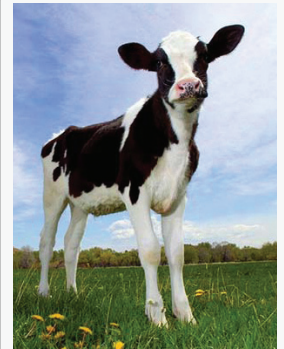
Move calf and teat to a multiple open feeder where they will remain until weaning. Use a blanking plug where necessary.



FROM DAY 14-21

ABOUT DAY 60

The weaned, healthy calf has a well developed rumen and excellent live weight gain.



ABOUT DAY 60

EXAMPLE 1



DAY 1



6 pens for 6 calves

FROM DAY 3

Removing teat is easy



Pull upwards to remove teat.

FOLLOW THE TEAT



Move teat from single to multiple feeder

FROM DAY 14-21

IMPORTANT

Each pen to have a dedicated Milk Bar™ calf feeder which is not moved from pen to pen.

NEW CALF, NEW



TEAT AND

"follow the teat"

EXAMPLE 2



DAY 1



2 pens, 2 x 5 compartment feeders for 10 calves

FROM DAY 3

Removing teat is easy



Pull upwards to remove teat.

FOLLOW THE TEAT



Move teat from single to multiple feeder

FROM DAY 14-21

EXAMPLE 3



Start calf on a dedicated open feeder, where calves will remain until weaning

DO:

Start new born calf on a new Milk Bar™ teat.

DO NOT:

Use a worn Milk Bar™ teat on a new born calf or a new Milk Bar™ teat on an older calf.



<http://youtu.be/7kPDpiWjvik>

For best results, it is essential to follow the guidelines for the **MILK BAR** system.



MB31

MILK BAR™ 50 MOBILE CALF FEEDER COMPLETE

Extremely easy to use. Simply tow your MILK BAR™ trailer to the group of calves, open the taps and pour the required amount of milk into the open manifolds.



- ✓ Manual leveller to ensure a good distribution of milk on any terrain
- ✓ Group feeding gives more time to observe the calves when feeding
- ✓ Easy to clean, simply rinse with an alkali based detergent
- ✓ Large capacity 500 litre tank with 50 Milk Bar™ teats



<https://youtu.be/mYKZwZsW6gI>

MILK BAR™ SINGLE CALF FEEDER

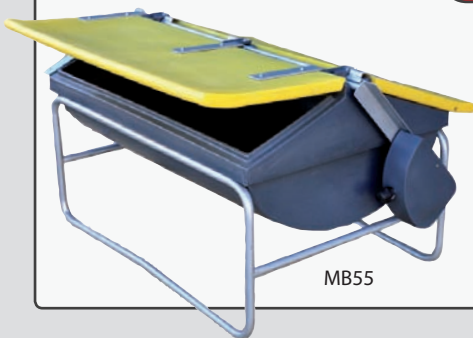
- ✓ Great 8 litre capacity
- ✓ Fitted with patented Ezi-Lock red hooks
- ✓ Reversible hooks allowing in or out of pen positioning
- ✓ Idea for use with hutches



MB37B



MILK BAR™ MEAL SAVER FEEDER



MB55



- ✓ Lids are counter balanced so calves easily lift them with their noses and close after they have eaten
- ✓ Keeps food dry and free from contamination
- ✓ Fitted on skids for transport
- ✓ Holds 150kg, 1.2m (L) x 0.8m (W) x 0.73m (H)

TRUST MILK BAR™

Thousands of dairy farms in New Zealand, Australia, France, Netherlands, Germany, UK, Ireland, Spain, Belgium, Denmark, Italy, USA and around the world for 30 years have chosen

