



# Volume Wash Down Pumps From Dairy Spares Ltd

Dairy Spares Limited  
Unit 1, Civic Industrial Park  
Waymills, Whitchurch  
Shropshire SY13 1TT

Telephone: 01948 667676  
Facsimile: 01948 666505  
email: sales@dairyspares.co.uk

## Dairy Spares Volume Wash Down Pump

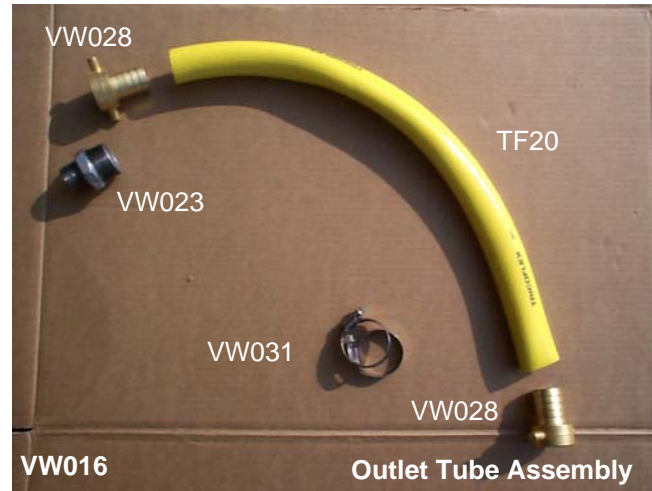
The Dairy Spares wash down system is powered by a high volume pumping unit.:

- This centrifugal jet pump is powered by a 2.2 hp single phase motor.
- It is capable of pumping up to 80 litres (17 gallons) per minute.
- Has a suction able of lifting water from a depth of up to 7 metres.
- Can be powered direct from a fused 13 Amp outlet.
- The pump body is constructed from cast iron with a maximum working pressure of 8 bar.
- The internal centrifugal power is driven by noryl impellers.

A varied selection of fully adjustable heavy duty wash guns, durable Tricoflex pressure hose capable of withstanding pressures up to 30 bar and the option of electronic flow control to start and stop the pump on demand



VW004 Volume Wash Kit Comprise Of		
Qty	DS Code	Description
1	VW005	Volume Wash Down Pump
1	VW014	Wash Down Kit
1	VW015	Suction Kit
1	VW016	Outlet Kit
1	VW018	Take Off Point



VW001 Volume Wash Kit Comprise Of		
Qty	DS Code	Description
1	VW005	Volume Wash Down Pump
1	VW010	Automatic Flow Control
1	VW011	Wash Down Kit (Blue Hose)
1	VW015	Suction Kit
1	VW016	Outlet Kit
1	VW018	Take Off Point

**VW002 Volume Wash Kit**  
As for VW001, LESS the VW010 Flow Control

VW003 Volume Wash Kit Comprise Of		
Qty	DS Code	Description
1	VW005	Volume Wash Down Pump
1	VW010	Automatic Flow Control
1	VW014	Wash Down Kit (Yellow Hose)
1	VW015	Suction Kit
1	VW016	Outlet Kit
1	VW018	Take Off Point

**VW004 Volume Wash Kit**  
As for VW003, LESS the VW010 Flow Control

VW011 H/D Wash Down Kit Comprises Of		
Qty	DS Code	Description
1	WG20	Brass Voluspray Gun
12.5m	TF70	Tress Nobel Blue Hose
1	WF03	Quick Release Coupling
3	VW031	Bandit Clips
1	WG15	Hose Clamp

**VW012 H/D Wash Down Kit Comprises Of**  
As VW011 utilising 1 x WG401 25mm Anka Wash Gun

VW013 H/D Wash Down Kit Comprises Of		
Qty	DS Code	Description
1	WG20	Brass Voluspray Gun
12.5m	TF20	Tricoflex Yellow Hose
1	WF03	Quick Release Coupling
3	MP11	Hose Clips
1	WG15	Hose Clamp

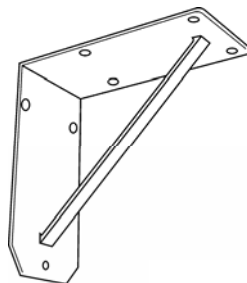
**VW014 H/D Wash Down Kit Comprises Of**  
As VW011 utilising 1 x WG401 25mm Anka Wash Gun



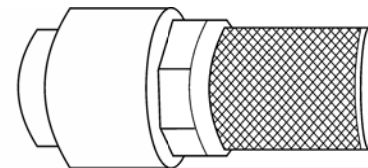
**VW010 Auto Flow Pump Controller**



**VW018 Take Off Point Kit**



**VW030 Wall Bracket**



**VW020 Foot valve & Filter**



**VW019 Service Kit Complete**

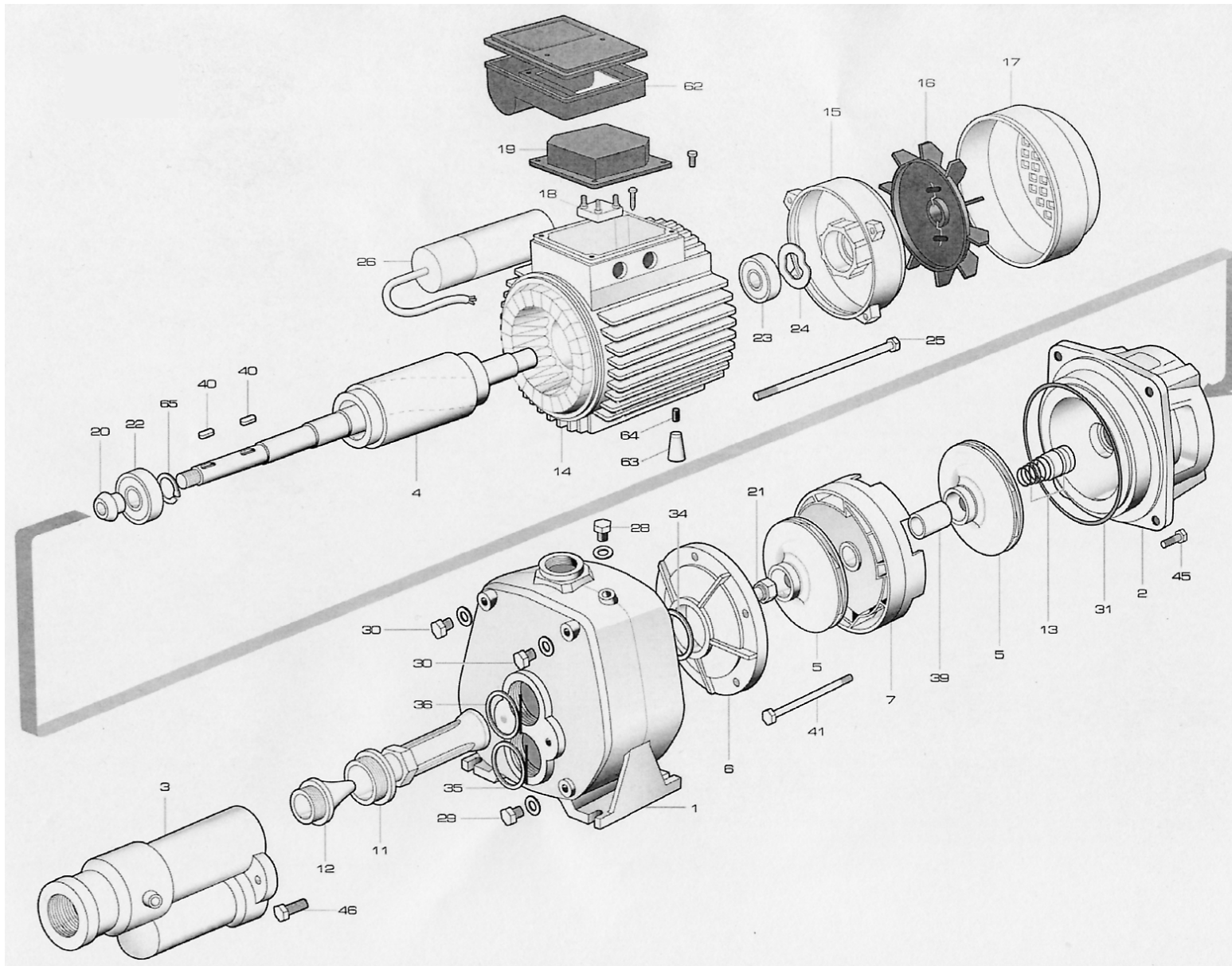
VW015 Suction Kit		
Qty	DS Code	Description
3M	VW022	Suction Hose
1	VW020	1 1/4" Foot Valve & Filter
1	VW027	Hose Connector
1	VW025	1 1/2" - 1 1/4" Hex Nipple
1	VW029	1 1/4" Cap/Liner /Washer
2	MP11	Hose Clips

VW016 1" Outlet Kit		
Qty	DS Code	Description
1	WG23	1" Galv Hex Nipple
0.5M	TF20	1" Tricoflex Yellow Hose
2	VW028	1" Cap / Liner / Washer
2	VW031	1" Bandit Clip

VW017 1 1/4" Outlet Kit		
Qty	DS Code	Description
1	WG24	1 1/4" - 1" Galv Hex Nipple
0.5M	TF30	1 1/4" Tricoflex Yellow Hose
2	VW029	1 1/4" Cap / Liner / Washer
2	VW032	1 1/4" Bandit Clip

VW018 Take Off Point Kit		
Qty	DS Code	Description
1	WD32	1" Lever Ball Valve
1	WD12	1" Quick Coupling

VW019 Volume Wash Service Kit		
Qty	DS Code	Description
1	VW038	Diffuser Cover
2	VW037	Impellor
1	VW039	Suction and Pressure Diffuser
1	VW040	Mechanical Seal Kit
1	VW049	Pump 'O' Ring Gasket



DS code	Description
1	Pump Body (VW036)
2	Motor Pump (VW060)
3	Ejector body (VW061)
4	Shaft & rotor 1 phase (VW062)
5	Impellor (2) (VW037)
6	Diffuser cover (1) (VW038)
7	Diffuser (1) (VW039)
11	Venturi tube (VW063)
12	Venturi nozzle (VW064)
13	Mechanical seal kit (1) (VW040)
14	Motor case & winding (VW065)
15	Motor end housing (VW066)
16	Fan (VW041)
17	Fan cover (VW042)
18	Terminal Block (VW043)
19	Terminal box cover (VW044)
20	Water seal (VW045)
21	Impellor lock nut (1) (VW046)
22	Pump side bearing (VW067)
23	Fan side bearing (VW068)
24	End float washer (VW069)
25	Motor assy bolt (VW070)
26	Motor capacitor (VW047)
28/29	Filling or Drain plug / bolt (VW048)
31	Pump 'O' ring gasket (1) (VW049)
34	Diffuser O Ring seal (VW050)
35	ejector body gasket (VW051)
36	ejector body (v tube) gasket (VW052)
39	Impellor spacer (VW053)
40	Shaft Key (1) (VW054)
41	Diffuser assy bolt (VW055)
62	Terminal / capacitor box assy (VW056)