



Volume Wash Down Pumps From Dairy Spares Ltd

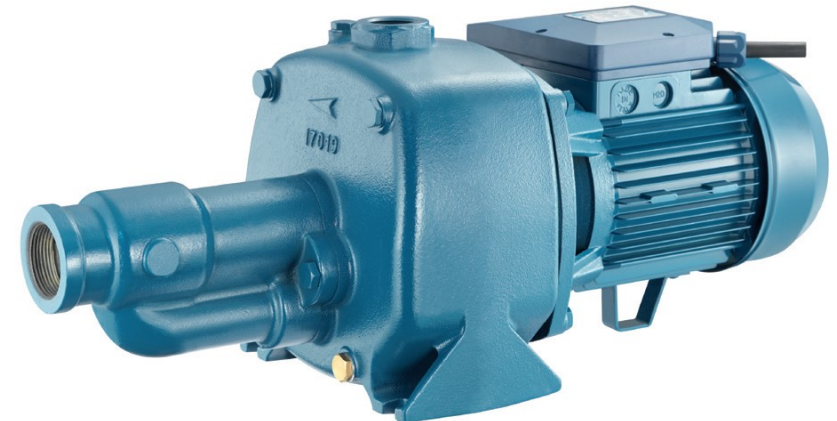
Dairy Spares Limited
 Godwin House
 Mullbry Business Park
 Shakespeare Way
 Whitchurch
 Shropshire
 SY13 1GR
 Tel: **01948 667676**
 Fax: **01948 666505**
 email: sales@dairyspares.co.uk

Dairy Spares Volume Wash Down Pump (VW005)

The Dairy Spares wash down system is powered by a high volume pumping unit.:

- This centrifugal jet pump is powered by a 2.2 hp single phase motor.
- It is capable of pumping up to 80 litres (17 gallons) per minute.
- Has a suction able of lifting water from a depth of up to 7 metres.
- Can be powered direct from a fused 13 Amp outlet.
- The pump body is constructed from cast iron with a maximum working pressure of 8 bar.
- The internal centrifugal power is driven by noryl impellers.

A varied selection of fully adjustable heavy duty wash guns, durable Tricoflex pressure hose capable of withstanding pressures up to 30 bar and the option of electronic flow control to start and stop the pump on demand



(VW005)

VW001 Volume Wash Kit		
Qty	DS Code	Description
1	VW005	Volume Wash Down Pump
1	VW065	Hydotank Flow Control
1	VW012	Wash Down Kit (Blue Hose)
1	VW015	Suction Kit
1	VW016	Outlet Kit
1	VW018	Take Off Point

VW003 Volume Wash Kit		
Qty	DS Code	Description
1	VW005	Volume Wash Down Pump
1	VW065	Hydotank Flow Control
1	VW014	Wash Down Kit (Yellow Hose)
1	VW015	Suction Kit
1	VW016	Outlet Kit
1	VW018	Take Off Point

VW011 H/D Wash Down Kit		
Qty	DS Code	Description
12.5M	TF70	Tress Nobel Blue Hose
1	VW031	Bandit Clips
1	WD03	Brass Hose Tail 1"
1	WG15	Hose Clamp
1	WG26	Brass Hose Tail For WG20
1	WG450	Brass Voluspray Nozzle Body

VW012 H/D Wash Down Kit		
Qty	DS Code	Description
1	MP11	25-40mm Jubilee Type Clip
12.5M	TF70	Tress Nobel Blue Hose
1	WD03	Brass Hose Tail 1"
1	WG15	Hose Clamp
1	WG410B	Anka Hose Tail 25mm
1	WG411A	Anka Hose Nozzle Body 25mm

VW013 H/D Wash Down Kit		
Qty	DS Code	Description
12.5M	TF20	Tricoflex Yellow Hose
1	VW031	Bandit Clips
1	WD03	Brass Hose Tail 1"
1	WG15	Hose Clamp
1	WG20	Brass Voluspray Gun 25mm

VW014 Volume Wash Kit		
Qty	DS Code	Description
1	AN010C	Anka Male Coupling 25mm
1	MP11	25-40mm Jubilee Type Clip
12.5M	TF20	Tricoflex Yellow Hose 25mmx25M
1	WD03	Brass Hose Tail 1"
1	WG411A	Anka Hose Nozzle Body 25mm

VW015 Suction Kit		
Qty	DS Code	Description
1	AN006C	Anka Check Valve 32mm
2	MP11	25-40mm Jubilee Type Clip
3M	TF89	Spiral Hose
1	VW025	11/2" - 11/4" Hex Nipple
1	VW027	Hose Connector
1	VW029	11/4" Cap/Liner /Washer
1	VW061	Footvalve Filter 1.25"

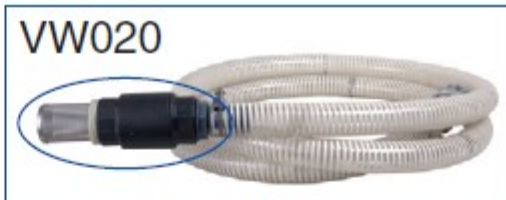
VW016 1" Outlet Kit		
Qty	DS Code	Description
2	MP11	25-40mm Jubilee Type Clip
0.5M	TF70	25mm Tress-Nobel Blue Hose
1	VW023	Hexagonal Nipple 1"
2	VW028	1" Cap / Liner / Washer

VW018 Take Off Point Kit		
Qty	DS Code	Description
1	WD12	1" Quick Coupling
1	WD32	1" Lever Ball Valve

VW019 Volume Wash Service Kit		
Qty	DS Code	Description
2	VW037	Impellor
1	VW038	Diffuser Cover
1	VW039	Suction and Pressure Diffuser
1	VW040	Mechanical Seal Kit
1	VW049	Pump 'O' Ring Gasket



VW065

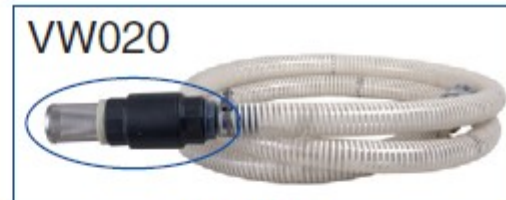


VW020

VW015



VW065



VW020

VW015



VW005



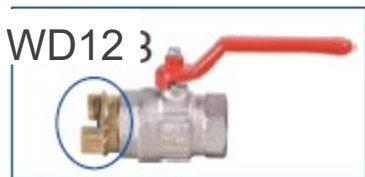
VW014



VW005



VW012



WD12 3

VW018

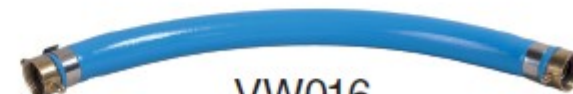


VW016



WD12

VW018



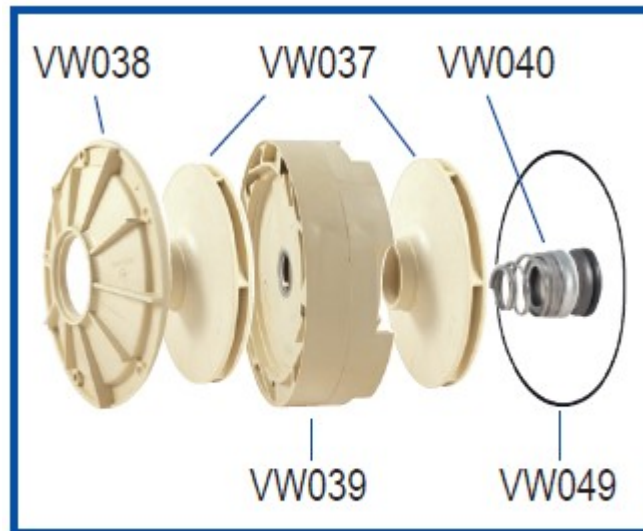
VW016

VW003

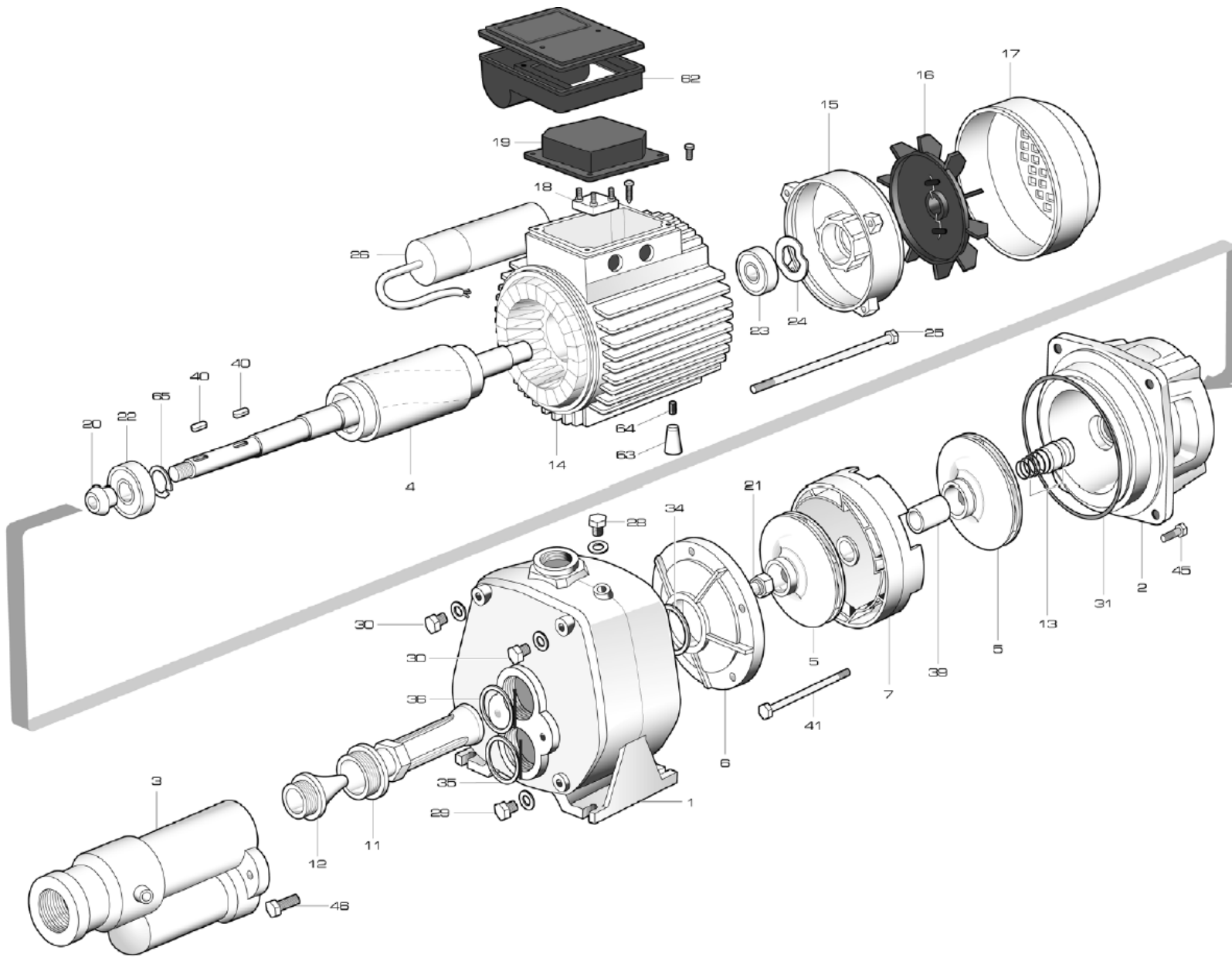


VW030

VW001



VW019



DS Code	Description
1	Pump Body (VW036)
5	Impellor (2) (VW037)
6	Diffuser Cover (1) (VW038)
7	Diffuser (1) (VW039)
11	Venturi Tube (VW063)
12	Venturi Nozzle (VW064)
13	Mechanical Seal Kit (1) (VW040)
16	Fan (VW041)
17	Fan Cover (VW042)
18	Terminal Block (VW043)
19	Terminal Box Cover (VW044)
20	Water Seal (VW045)
21	Impellor Lock Nut (1) (VW046)
22	Pump Side Bearing (VW067)
23	Fan Side Bearing (VW068)
25	Motor Assy Bolt (VW070)
26	Motor Capacitor (VW047)
28/29	Filling Or Drain Plug / Bolt (VW048)
31	Pump 'O' Ring Gasket (1) (VW049)
34	Diffuser O Ring Seal (VW050)
35	Ejector Body Gasket (VW051)
36	Ejector Body (V Tube) Gasket (VW052)
39	Impellor Spacer (VW053)
40	Shaft Key (1) (VW054)
41	Diffuser Assembly Bolt (VW055)
62	Terminal / Capacitor Box Assembly (VW056)